



# Specs at a Glance

Powered & Non-Powered

## HEAVY DUTY & SUPER DUTY WHIPS

1 YEAR  
LIMITED  
WARRANTY

### Heavy Duty Telescoping Whip

#### Extremely Durable & Adjustable Capabilities!

- Mine Tough™ rigid wrapped Heavy Duty Fiberglass
- (3) locking sections with (2) locks for quick adjusting
- Powered with an External Waterproof Connector Plug with 1156 Type light socket

Available in 11', 13', 15' & 21' Lengths



FULLY  
EXTENDED!  
11ft (3.35m)

Locking Section



FULLY  
COLLAPSED!

Lock

#### TW11D-X

11ft (3.35m) Powered Telescoping Whip with 16" orange mesh flag with yellow reflective "X"

1 YEAR  
LIMITED  
WARRANTY

### Heavy Duty Fiberglass Whip

#### Available in Threaded or Quick Disconnect!

- Most common whip sold on the market today
- Constructed with Heavy Duty Fiberglass, powered with 1156 Type light socket and rust & corrosion resistant Threaded Hex base.
- Offered as Single Piece, Two-Piece Breakdown or Split-Pole options with Fiberglass Whip Extensions available for added length.



5', 8', 10' & 12' Standard Whip Lengths  
(custom sizes also available)



Powered  
Threaded Bulkhead  
with RCA Connection

#### W05-X-SC4Cx

5ft (1.52m) Powered with Single Color SC4 Series Whip Light (constant mode) and 16" orange mesh flag with yellow reflective "X"  
(x = LED color)

6 MONTH  
LIMITED  
WARRANTY

### Super Duty LED Whip

**TOUGHEST  
LED Whip Built!**

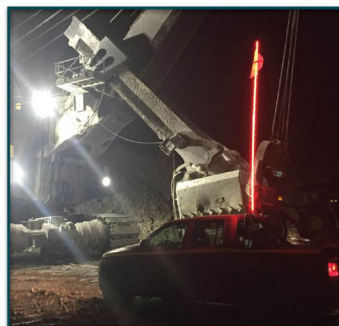
#### Up to 10ft of fully protected LED Lighting from Top to Bottom!

- Reliable, High Visibility whip solution under extreme weather conditions
- Impact & Weather resistant - constructed of a Fiberglass internal pole with rugged polycarbonate external tubing for advanced protection
- Engineered with a protective Pressure Vent to equalize pressures while blocking water and contaminants



Protective Pressure  
Humidity Vent  
To equalize pressures  
while blocking water  
& contaminants

Available in 4', 6', 8' and 10' Lengths



Available Colors:  
Amber, Blue, Green, White and Red

Available in:  
12Vdc and 24Vdc

#### SDL06R-XY

6ft (1.82m) - Red LEDs  
Super Duty LED Whip  
with 16" orange safety  
flag with yellow  
reflective "X"

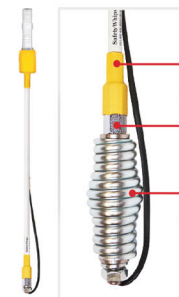
1 YEAR  
LIMITED  
WARRANTY

### Super Duty ALL WEATHER™ Fiberglass Whip

#### Powered with a Threaded Hex Mount Base!

- Super-sealed, robust whips built for strength
- Safe and non-conductive heavy duty Fiberglass with increased durability with added "locked-in" shielding components (heat shrink) top & bottom
- Customizable complete whip assembly setups to ensure all needs are met!

Available from 1' to 12' Whip Lengths  
(with or without Safety Flag or spring base)



Heat Shrink Seal

Threaded Hex Whip Base

Super Duty Whip Base  
with Heavy Duty Powered  
Spring Mount (optional)

#### SD10-YXW-30B-SC3X (x = LED color)

Whip Assembly Setup: 10ft (3.05m) with SC3 Series Whip Light, 519-30B Heavy Duty Spring & 16" yellow mesh Flag with white reflective "X"

### ADDRESS:

2115 W. Mountain View Rd.  
Phoenix, AZ 85021 USA

2677 192nd St. #107  
Surrey, BC V3Z 3X1 CANADA

For More Information Call or Visit Us Online Today!

**USA**

T: 602.424.2500

F: 602.424.9777

E: Sales@DriverIndustrial.com

**CAN**

T: 604.560.5080

F: 604.560.5090

E: SalesCanada@SafetyWhips.com





A Brand of

DRIVER  
INDUSTRIAL

## HARSH ENVIRONMENT

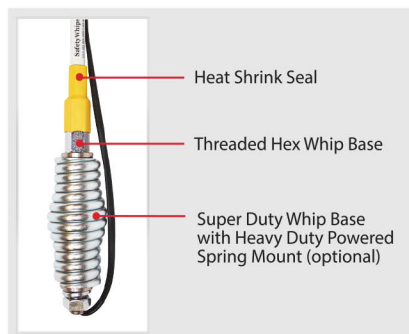
## SNOW PLOW WHIP SOLUTIONS

**SD05-30B-SC3R**

Whip Assembly Setup: 5ft (1.52m) Super Duty Warning Whip (threaded base) with Super Bright SC3 Series Whip Light (Red) and 519.30B Heavy Duty Spring

**Super Duty All Weather™ Whip with Threaded Hex Mount**

- Super-sealed, robust whips built for heavy duty strength!
- Safe and non-conductive heavy duty Fiberglass with increased durability with added "locked-in" shielding components (heat shrink) top & bottom
- Customizable complete whip assembly setups to ensure all needs are met!

**1ft to 12ft Whip Lengths Available!***Whip Assemblies also Offered without a Safety Flag or Heavy Duty Spring***SD01-SC4Cx** (x = LED color)Complete Whip Assembly:  
1ft (.30m), 1/2" rod - Powered with Single Color SC4 Series LED Whip Light, Constant Mode  
\*No Flag or Spring\***TOUGHEST  
LED Whip Built!****SDL04A**

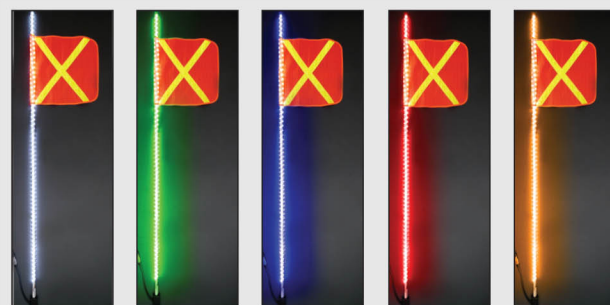
4ft (1.22m) Super Duty LED Whip (Amber LEDs)

**SDL04G**

4ft (1.22m) Super Duty LED Whip (Green LEDs)

**Super Duty LED Warning Whip**

- Super-sealed, robust whips built for Heavy Duty strength!
- Safe and non-conductive heavy duty Fiberglass with increased durability with added "locked-in" shielding components (heat shrink) top & bottom
- Customizable complete whip assemblies to ensure all needs are met!
- Standard Whip Lengths of 4ft, 6ft, 8ft, 10ft

**10ft of Protected LED Lighting from Top to Bottom!***Available With or Without a Safety Flag!***SDL04W-XY**

White

**SDL04G-XY**

Green

**SDL04B-XY**

Blue

**SDL04R-XY**

Red

**SDL04A-XY**

Amber

(x = LED color) **SDL04x**4ft (1.22m) Super Duty LED Whip  
\*No Flag included**ADDRESS:**2115 W. Mountain View Rd.  
Phoenix, AZ 85021 USA2677 192nd St. #107  
Surrey, BC V3Z 3X1 CANADA**USA****T: 602.424.2500****F: 602.424.9777**

For More Information Call or Visit Us Online Today!

**E: Sales@DriverIndustrial.com****CAN****T: 604.560.5080****F: 604.560.5090****E: SalesCanada@SafetyWhips.com**