

SafetyWhips® Permanent Whip Mounts



519.821:
cigarette cord power adapter
ships w/ Powered Magnet Mounts
Available as a separate part.



ABM: Angle Bracket Mount
Attach whips to toolbox, rack
or truck bed with this heavy
duty bracket.

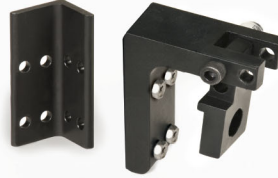


**FSM: Universal
Flat Surface Mount**



FDM: Fold Down Mount
Heavy Duty mount attaches
whips to tool box or back rack

Use with FDSM-Lock Pin
(sold separately)



FDSM: Fold Down Mount
Attaches whips to the truck side
wall, tool box or back rack. It
provides a quick and efficient
way to fold whips down when
leaving a job site or passing
under low overhangings.

New Item!



Stainless Steel

FDVM

NEW – Side Wall Mount
Great for panel trucks and vans.
Allows whip fold down to right or left
Whips up to 12 Ft

*Use with **Part #: RH01**
Whip Retaining Hook
(sold separately)



Temporary Whip Mounts

*Includes (3) 150# Pull Cup Magnets and Lifting Handle

**Includes (3) 150# Pull Cup Magnets



These Medium Duty Magnet Mounts are
non-destructive mounting options for
whips, handling maximum speeds up to
35MPH (56 KPH). The "Quick Release"
feature is a typical option when ordering
a Powered Magnet Mount.

*For whips up to 8' (243.84cm)



519.33LHR*
Powered, Magnet Mount
with Quick-Disconnect Mount



519.33LHR*
Powered



519.33LR**
Powered



519.33LHRNP*
Non-Powered



519.33LRNP**
Non-Powered



A Light Duty Window Mount
solution with easy, temporary
install & removal on a vehicle.
*For use with Light Duty Whips
(ATV308 whips)
*For whips up to 7' (213.36cm)

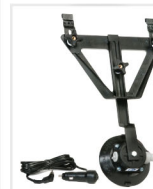


LWW-MOUNT
Light Duty Window Mount



519 320-V
Heavy Duty Window Mount with Vacuum Mount & Cigarette Cord

A Heavy Duty Window Mount
solution with vacuum suction
application. Easy to install &
remove on a vehicle.
*Powered & Non-powered
(Part #: 519.320NP-V) options available



*For whips up to 8' (243.84cm)



These Heavy Duty Magnet Mounts
handle maximum speeds up to
70MPH (112 KPH). Shown below
with optional cigarette power
adapter.

*Non-powered option also available
(Part #: 519.330NP)



519.330
Heavy Duty Magnet Mount

*Includes (4) 150# pull magnets
& cigarette cord

*For whips up to 12'
(365.77cm)



*For whips up to 12' (365.77cm)

This Heavy Duty, Universal
Fit Aluminum Mount is easily
applied by tightly wedging onto
vehicle. A solid fit for all whip
types. Has adjustable base
plates. No drilling needed!



SPM
Stake Pocket Mount