



Specs at a Glance

Powered & Non-Powered

A Brand of

DRIVER
INDUSTRIAL

HEAVY DUTY & SUPER DUTY WHIPS

1 YEAR
LIMITED
WARRANTY

Heavy Duty Telescoping Whip

Extremely Durable & Adjustable Capabilities!

- Mine Tough™ rigid wrapped Heavy Duty Fiberglass
- (3) locking sections with (2) locks for quick adjusting
- Powered with an External Waterproof Connector Plug with 1156 Type light socket

Available in 11', 13', 15' & 21' Lengths



FULLY
EXTENDED!
11ft (3.35m)

Locking Section



FULLY
COLLAPSED!

Lock

TW11D-X

11ft (3.35m) Powered
Telescoping Whip with 16"
orange mesh flag with
yellow reflective "X"

1 YEAR
LIMITED
WARRANTY

Heavy Duty Fiberglass Whip

Available in Threaded or Quick Disconnect!

- Most common whip sold on the market today
- Constructed with Heavy Duty Fiberglass, powered with 1156 Type light socket and rust & corrosion resistant Threaded Hex base.
- Offered as Single Piece, Two-Piece Breakdown or Split-Pole options with Fiberglass Whip Extensions available for added length.



5', 8', 10' & 12' Standard Whip Lengths
(custom sizes also available)



Powered
Threaded Bulkhead
with RCA Connection

W05-X-SC4Cx

5ft (1.52m) Powered
with Single Color SC4 Series
Whip Light (constant mode)
and 16" orange mesh flag
with yellow reflective "X"
(x = LED color)

6 MONTH
LIMITED
WARRANTY

Super Duty LED Whip

**TOUGHEST
LED Whip Built!**

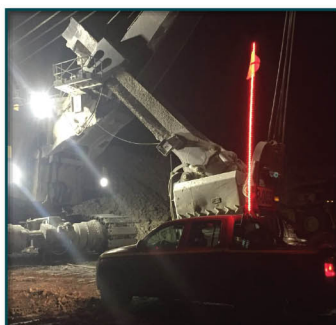
Up to 10ft of fully protected LED Lighting from Top to Bottom!

- Reliable, High Visibility whip solution under extreme weather conditions
- Impact & Weather resistant - constructed of a Fiberglass internal pole with rugged polycarbonate external tubing for advanced protection
- Engineered with a protective Pressure Vent to equalize pressures while blocking water and contaminants



Protective Pressure
Humidity Vent
To equalize pressures
while blocking water
& contaminants

Available in 4', 6', 8' and 10' Lengths



Available Colors:

Amber, Blue, Green, White and Red

Available in:

12Vdc and 24Vdc

SDL06R-XY

6ft (1.82m) - Red LEDs
Super Duty LED Whip
with 16" orange safety
flag with yellow
reflective "X"

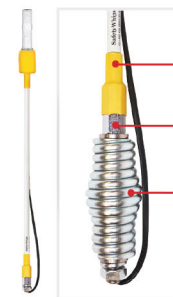
1 YEAR
LIMITED
WARRANTY

Super Duty ALL WEATHER™ Fiberglass Whip

Powered with a Threaded Hex Mount Base!

- Super-sealed, robust whips built for strength
- Safe and non-conductive heavy duty Fiberglass with increased durability with added "locked-in" shielding components (heat shrink) top & bottom
- Customizable complete whip assembly setups to ensure all needs are met!

Available from 1' to 12' Whip Lengths
(with or without Safety Flag or spring base)



Heat Shrink Seal

Threaded Hex Whip Base

Super Duty Whip Base
with Heavy Duty Powered
Spring Mount (optional)

SD10-YXW-30B-SC3x

Whip Assembly Setup: 10ft (3.05m) with SC3 Series Whip Light, 519.30B
Heavy Duty Spring & 16" yellow mesh Flag with white reflective "X"

ADDRESS:

2115 W. Mountain View Rd.
Phoenix, AZ 85021 USA

2677 192nd St. #107
Surrey, BC V3Z 3X1 CANADA

For More Information Call or Visit Us Online Today!

USA

T: 602.424.2500

F: 602.424.9777 LED color **E: Sales@DriverIndustrial.com**

CAN

T: 604.560.5080

F: 604.560.5090 **E: SalesCanada@SafetyWhips.com**